

## TABLE OF CONTENTS

### = WOOD & FINISHING PRODUCTS =

|   |           |
|---|-----------|
| Spruce Tops .....   | G2        |
| Maple Backs .....   | G3        |
| Neck Blocks, Neck Grafting Blocks, Necks with Scrolls ..... | G4        |
| Finished Necks, Ribs .....                                  | G5        |
| Linings, Blocks, Garlands, Purfling .....                   | G6        |
| Peghole Bushings, Cork, Bass Bars, Soundposts .....         | G7        |
| Fingerboards, Nuts, Saddles .....                           | G8        |
| Core Shop Apron .....                                       | G9        |
| “Old Wood” Finishing Products .....                         | G10 - G11 |
| Finishing Information .....                                 | G12 - G13 |
| Balsamic Oils & Varnishes .....                             | G14       |
| Varnishes & Solvents .....                                  | G15       |
| Resins For Making Varnish .....                             | G16       |
| Natural Dyes For Making Varnish .....                       | G16       |
| Aniline Dyes .....  | G17       |
| Nitro Sticks .....  | G17       |
| Polishes, Cleaners, Miscellaneous .....                     | G18       |
| Brushes .....   | G19       |
| Updates (electronic version only) .....                     | G20       |



**Alpentonholz Pahler** is a personally managed tonewood company with many years of experience sourcing and preparing timber for the making of quality stringed instruments. We specialize in European spruce (*Picea abies*) which grows on the upper slopes of the Alps, in mixed and protected forests at about 3,000 feet above sea level, as well as in maple (*Acer pseudoplatanus*). With a base in Mittenwald as well as in Westerholzhausen, Bavaria we are very well placed to find the best wood. The wood is cut according to moon phases where appropriate; the best time is a descending and waning moon.

Alpentonholz (Alpine Tone Wood) was founded by violin maker and forester Andreas Pahler.

After training at the Mittenwald Violin Making school he worked in various restoration and violinmaking workshops. He then went on to study forestry at the Technical University in Munich where he specialized in wood technology. Before founding Alpentonholz, Andreas worked for a London-based timber consultancy, where he personally selected fine tonewood.

Today, Alpentonholz is internationally respected as a source for excellent tonewood, selected by top makers and crafted into award-winning instruments.

## SPRUCE TOPS

### SPLITS

| no.           | description                        | net price |
|---------------|------------------------------------|-----------|
| <b>VIOLIN</b> |                                    |           |
| TW-584.314    | Alpean spruce top violin select    | 19.90     |
| TW-584.315    | Alpean spruce top violin fine      | 39.00     |
| TW-584.316    | Alpean spruce top violin very fine | 59.00     |
| TW-584.317    | Alpean spruce top violin Pahler    | 79.00     |
| <b>CELLO</b>  |                                    |           |
| TW-584.414    | Alpean spruce top cello select     | 119.00    |
| TW-584.415    | Alpean spruce top cello fine       | 199.00    |
| TW-584.416    | Alpean spruce top cello very fine  | 299.00    |
| TW-584.417    | Alpean spruce top cello Pahler     | 490.00    |



## BACKS

### SPLITS

| no.           | description  | net price |
|---------------|--|-----------|
| <b>VIOLIN</b> |  |           |
| TW-584.514    | Bosnian maple belly and ribs violin - Pahler Selection | 139.00    |
| TW-584.515    | Bosnian maple belly and ribs violin - Pahler Excellent | 219.00    |
| <b>CELLO</b>  |  |           |
| TW-584.524    | Bosnian maple belly and ribs cello - Pahler Selection  | 590.00    |
| TW-584.525    | Bosnian maple belly and ribs cello - Pahler Excellent  | 990.00    |



**RIBS**

| no.        | description                       | net price |
|------------|-----------------------------------|-----------|
| TW-584.510 | Rib stock violin. Top grade, cut. | 52.80     |
| TW-584.520 | Rib stock cello. Top grade, cut.  | 330.00    |



**TW-584.510**

**BLOCKS**

| no.        | description                   | net price |
|------------|-------------------------------|-----------|
| TW-584.503 | Blockwood violin willow       | 8.47      |
| TW-584.504 | Blockwood violin spruce split | 7.70      |
| TW-584.505 | Blockwood violin              | 4.90      |
| TW-584.604 | Blockwood cello willow        | 27.83     |
| TW-584.605 | Blockwood cello spruce        | 27.83     |



**TW-584.505**

**LININGS**

| no.        | description               | net price |
|------------|---------------------------|-----------|
| TW-584.507 | Lining wood violin        | 10.34     |
| TW-584.508 | Lining wood violin willow | 10.34     |
| TW-584.607 | Lining wood cello spruce  | 15.07     |
| TW-584.608 | Lining wood cello willow  | 15.07     |



**TW-584.607**

**BASS BAR SPLITS**

| no.        | description           | net price |
|------------|-----------------------|-----------|
| TW-584.506 | Bassbar splits violin | 7.90      |
| TW-584.606 | Bassbar splits cello  | 24.90     |



**TW-584.506**



**TW-584.606**

**BUSHINGS**

| no.        | description   | net price |
|------------|---|-----------|
| TW-595.723 | Boxwood conical endpin hole bushings for cello/bass, 153x36/27mm. | 8.90      |
| TW-595.724 | Boxwood conical endpin hole bushings for cello/bass, 153x30/21mm. | 8.90      |



**TW-595.723**



**TW-595.724**

WOOD



**SETS**

| no.        | description   | net price |
|------------|---|-----------|
| TW-593.600 | Master set violin. Guarneri-inspired, with one-piece back, ribs, neck, and top. | 400.00    |
| TW-593.601 | Master set violin. Guarneri-inspired, with two-piece back, ribs, neck, and top. | 375.00    |
| TW-593.602 | Master set viola. Guadagnini-inspired, with back, ribs, neck, and top.          | 425.00    |
| TW-593.603 | Master set cello. Strad-inspired, with back, ribs, neck, and top.               | 2,800.00  |



**TW-593.600**



**TW-593.602**



**TW-593.603**

**REPAIR WOOD PANEL**

| no.        | description                    | net price |
|------------|--------------------------------|-----------|
| TW-584.609 | Repair wood panel, spruce. 18c | 9.90      |



**TW-584.609**



**SOUNDPOSTS - VIOLIN**

| no.       | description                             | net price |
|-----------|---|-----------|
| SW593.305 | Soundpost 15" violin 6.0 Premium        | 9.90      |
| SW593.306 | Soundpost 15" violin 6.2 Premium        | 9.90      |
| SW593.307 | Soundpost 15" violin 6.3 Premium        | 9.90      |
| SW593.405 | Soundpost split 6.5" violin 6.0 Premium | 9.90      |
| SW593.406 | Soundpost split 6.5" violin 6.2 Premium | 9.90      |
| SW593.407 | Soundpost split 6.5" violin 6.3 Premium | 9.90      |

**SOUNDPOSTS - VIOLA**

| no.       | description                            | net price |
|-----------|--|-----------|
| SW593.308 | Soundpost 15" viola 6.5 Premium        | 11.90     |
| SW593.309 | Soundpost 15" viola 7.0 Premium        | 11.90     |
| SW593.310 | Soundpost 15" viola 7.25 Premium       | 11.90     |
| SW593.408 | Soundpost split 6.5" viola 6.5 Premium | 11.90     |
| SW593.409 | Soundpost split 6.5" viola 7.0 Premium | 11.90     |
| SW593.410 | Soundpost split 6.5" viola 7.5 Premium | 11.90     |



SW593.305

**SOUNDPOSTS - CELLO**

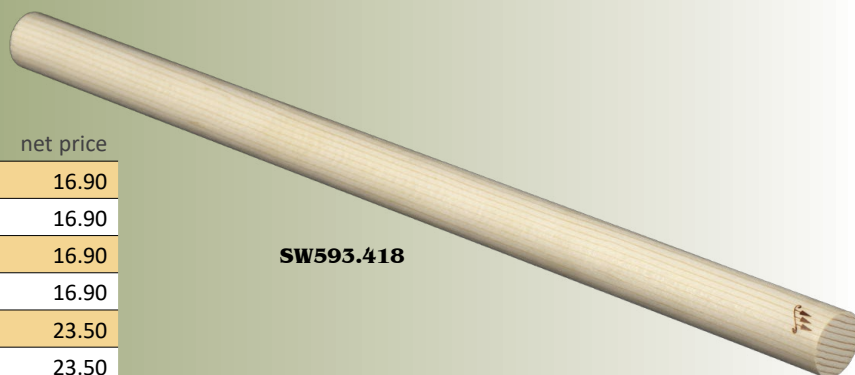
| no.       | description                             | net price |
|-----------|---|-----------|
| SW593.311 | Soundpost 15" cello 10.0 Premium        | 13.90     |
| SW593.312 | Soundpost 15" cello 10.5 Premium        | 13.90     |
| SW593.313 | Soundpost 15" cello 11.0 Premium        | 13.90     |
| SW593.314 | Soundpost 15" cello 11.5 Premium        | 13.90     |
| SW593.315 | Soundpost 15" cello 12.0 Premium        | 13.90     |
| SW593.411 | Soundpost split 6.5" cello 10.0 Premium | 13.90     |
| SW593.412 | Soundpost split 6.5" cello 10.5 Premium | 13.90     |
| SW593.413 | Soundpost split 6.5" cello 11.0 Premium | 13.90     |
| SW593.414 | Soundpost split 6.5" cello 11.5 Premium | 13.90     |
| SW593.415 | Soundpost split 6.5" cello 12.0 Premium | 13.90     |



SW593.313

**SOUNDPOSTS - BASS**

| no.       | description                           | net price |
|-----------|---------------------------------------|-----------|
| SW593.316 | Soundpost 14" bass 16.0 Premium       | 16.90     |
| SW593.317 | Soundpost 14" bass 18.0 Premium       | 16.90     |
| SW593.318 | Soundpost 14" bass 19.0 Premium       | 16.90     |
| SW593.319 | Soundpost 14" bass 20.0 Premium       | 16.90     |
| SW593.416 | Soundpost split 14" bass 16.0 Premium | 23.50     |
| SW593.417 | Soundpost split 14" bass 18.0 Premium | 23.50     |
| SW593.418 | Soundpost split 14" bass 19.0 Premium | 23.50     |
| SW593.419 | Soundpost split 14" bass 20.0 Premium | 23.50     |



SW593.418

WOOD



## SPRUCE TOPS

## SPLITS

| no.           | description             | net price |
|---------------|-------------------------|-----------|
| <b>VIOLIN</b> |                         |           |
| TW110-1A      | Select quality, old     | 89.73     |
| TW110-1B      | Professional quality    | 65.80     |
| TW110-1C      | Very good quality       | 35.89     |
| TW110-1D      | Good quality            | 23.93     |
| TW110-1E      | Student quality         | 11.96     |
| TW110-1F      | Lowest grade - flawed   | 6.80      |
| TW110-1S      | Finest available, split | CALL      |

## VIOLA

|          |                       |        |
|----------|-----------------------|--------|
| TW210-1A | Select quality, old   | 101.69 |
| TW210-1B | Professional quality  | 77.76  |
| TW210-1C | Very good quality     | 43.07  |
| TW210-1D | Good quality          | 28.71  |
| TW210-1E | Student quality       | 14.36  |
| TW210-1F | Lowest grade - flawed | 7.94   |
| TW210-1S | Finest available      | CALL   |

## CELLO

|          |                       |        |
|----------|-----------------------|--------|
| TW310-1A | Select quality, old   | 658.00 |
| TW310-1B | Professional quality  | 568.28 |
| TW310-1C | Very good quality     | 329.00 |
| TW310-1D | Good quality          | 251.24 |
| TW310-1E | Student quality       | 137.58 |
| TW310-1F | Lowest grade - flawed | 83.75  |
| TW310-1S | Finest available      | CALL   |

## BASS - LIMITED AVAILABILITY

|          |                      |          |
|----------|----------------------|----------|
| TW410-1B | Professional quality | 1,794.56 |
| TW410-1C | Very good quality    | 897.28   |
| TW410-1D | Good quality         | 658.00   |
| TW410-1E | Student quality      | 418.73   |

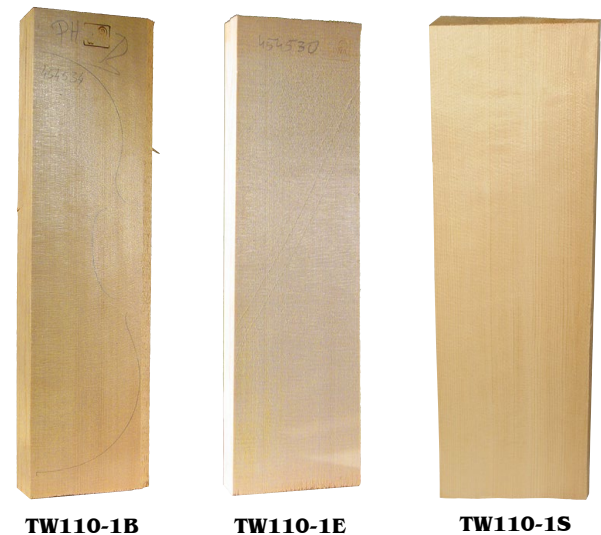
## ROUTED AND JOINED

| no.           | description          | net price |
|---------------|----------------------|-----------|
| <b>VIOLIN</b> |                      |           |
| TW112-1A      | Select quality, old  | 88.69     |
| TW112-1B      | Professional quality | 53.21     |
| TW112-1C      | Very good quality    | 41.39     |
| TW112-1D      | Good quality         | 29.56     |
| TW112-1E      | Student quality      | 23.65     |

## VIOLA - AVAILABLE AS SPECIAL ORDER IN THESE SIZES: 15", 15½", 16", 16½"

|          |                      |        |
|----------|----------------------|--------|
| TW212-1A | Select quality, old  | 106.43 |
| TW212-1B | Professional quality | 63.86  |
| TW212-1C | Very good quality    | 49.67  |
| TW212-1D | Good quality         | 35.48  |
| TW212-1E | Student quality      | 28.38  |

## CELLO BY SPECIAL ORDER ONLY



TW310-1A



**MAPLE BACKS - WITH SET OF MATCHING RIBS**

**SPLITS**

| no.                                | description                       | net price |
|------------------------------------|-----------------------------------|-----------|
| <b>VIOLIN</b>                      |                                   |           |
| TW120-1A                           | Exceptional quality - well flamed | 221.33    |
| TW120-1B                           | Professional grade - well flamed  | 143.56    |
| TW120-1C                           | Very good quality - flamed        | 77.76     |
| TW120-1D                           | Good quality - lightly flamed     | 41.87     |
| TW120-1E                           | Student quality - plain           | 17.95     |
| TW120-1F                           | Lowest grade - flawed             | 10.21     |
| TW120-1S                           | Select quality IA                 | CALL      |
| <b>VIOLA</b>                       |                                   |           |
| TW220-1A                           | Exceptional quality - well flamed | 269.18    |
| TW220-1B                           | Professional grade - well flamed  | 172.28    |
| TW220-1C                           | Very good quality - flamed        | 93.32     |
| TW220-1D                           | Good quality - lightly flamed     | 50.25     |
| TW220-1E                           | Student quality - plain           | 21.53     |
| TW220-1F                           | Lowest grade - flawed             | 13.16     |
| TW220-1S                           | Select quality IA                 | CALL      |
| <b>CELLO</b>                       |                                   |           |
| TW320-1A                           | Exceptional quality - well flamed | 1,016.92  |
| TW320-1B                           | Professional grade - well flamed  | 687.92    |
| TW320-1C                           | Very good quality - flamed        | 466.58    |
| TW320-1D                           | Good quality - lightly flamed     | 275.17    |
| TW320-1E                           | Student quality - plain           | 125.62    |
| TW320-1F                           | Lowest grade - flawed             | 77.76     |
| TW320-1S                           | Select quality IA                 | CALL      |
| <b>BASS - LIMITED AVAILABILITY</b> |                                   |           |
| TW420-1B                           | Professional grade - well flamed  | 1,569.75  |
| TW420-1C                           | Very good quality - flamed        | 1,312.50  |
| TW420-1D                           | Good quality - lightly flamed     | 577.50    |
| TW420-1E                           | Student quality - plain           | 519.75    |

**ROUTED AND JOINED**

| no.  | description                       | net price |
|--|-----------------------------------|-----------|
| <b>VIOLIN</b>                                |                                   |           |
| TW122-1A                                     | Exceptional quality - well flamed | 165.55    |
| TW122-1B                                     | Professional grade - well flamed  | 106.43    |
| TW122-1C                                     | Very good quality - flamed        | 76.86     |
| TW122-1D                                     | Good quality - lightly flamed     | 41.39     |
| TW122-1E                                     | Student quality - plain           | 29.56     |
| TW122-1S                                     | Select quality IA                 | CALL      |
| <b>VIOLA</b>                                 |                                   |           |
| TW222-1A                                     | Exceptional quality - well flamed | 178.92    |
| TW222-1B                                     | Professional grade - well flamed  | 122.98    |
| TW222-1C                                     | Very good quality - flamed        | 150.17    |
| TW222-1D                                     | Good quality - lightly flamed     | 44.94     |
| TW222-1E                                     | Student quality - plain           | 29.56     |
| <b>CELLO Fractional sizes also available</b> |                                   |           |
| TW322-1A                                     | Exceptional quality - well flamed | CALL      |
| TW322-1B                                     | Professional grade - well flamed  | 567.60    |
| TW322-1C                                     | Very good quality - flamed        | 390.23    |
| TW322-1D                                     | Good quality - lightly flamed     | 319.28    |
| TW322-1E                                     | Student quality - plain           | 206.94    |



**ONE-PIECE BACKS ALSO AVAILABLE  
PLEASE INQUIRE**

**ORDER ONLINE !!**  
[www.howardcore.com](http://www.howardcore.com)



WOOD

## NECK BLOCKS



| no.                                | description   | net price |
|------------------------------------|---|-----------|
| <b>VIOLIN</b>                      |   |           |
| TW130-1A                           | Exceptional quality - well flamed                     | 83.75     |
| TW130-1B                           | Professional grade - well flamed                      | 53.84     |
| TW130-1C                           | Very good quality - flamed                            | 29.91     |
| TW130-1D                           | Good quality - lightly flamed                         | 13.16     |
| TW130-1E                           | Student quality - plain                               | 8.38      |
| TW130-1F                           | Lowest grade - flawed                                 | 5.98      |
| TW130-1S                           | Select quality IA                                     | CALL      |
| <b>VIOLA</b>                       |   |           |
| TW230-1A                           | Exceptional quality - well flamed                     | 100.50    |
| TW230-1B                           | Professional grade - well flamed                      | 65.80     |
| TW230-1C                           | Very good quality - flamed                            | 35.89     |
| TW230-1D                           | Good quality - lightly flamed                         | 15.55     |
| TW230-1E                           | Student quality - plain                               | 12.92     |
| TW230-1F                           | Lowest grade - flawed                                 | 7.18      |
| TW230-1S                           | Select quality IA                                     | CALL      |
| <b>CELLO</b>                       |   |           |
| TW330-1A                           | Exceptional quality - well flamed                     | 329.00    |
| TW330-1B                           | Professional grade - well flamed                      | 209.37    |
| TW330-1C                           | Very good quality - flamed                            | 143.56    |
| TW330-1D                           | Good quality - lightly flamed                         | 94.51     |
| TW330-1E                           | Student quality - plain                               | 44.27     |
| TW330-1F                           | Lowest grade - flawed                                 | 29.91     |
| TW330-1S                           | Select quality IA                                     | CALL      |
| <b>BASS - LIMITED AVAILABILITY</b> |   |           |
| TW430-1A                           | Exceptional quality - well flamed <b>DISCONTINUED</b> |           |
| TW430-1C                           | Very good quality - flamed                            | 508.46    |
| TW430-1D                           | Good quality - lightly flamed                         | 692.76    |
| TW430-1E                           | Student quality - plain                               | 215.34    |
| TW430-1F                           | Lowest grade - flawed <b>DISCONTINUED</b>             |           |



TW130-1A



TW130-1E

## NECK GRAFTING BLOCKS



| no.           | description                       | net price |
|---------------|-----------------------------------|-----------|
| <b>VIOLIN</b> |                                   |           |
| TW131-1A      | Exceptional quality - well flamed | 41.39     |
| TW131-1B      | Professional grade - well flamed  | 23.65     |
| TW131-1D      | Good quality - lightly flamed     | 7.10      |
| <b>VIOLA</b>  |                                   |           |
| TW231-1A      | Exceptional quality - well flamed | 53.21     |
| TW231-1B      | Professional grade - well flamed  | 29.56     |
| TW231-1D      | Good quality - flamed             | 14.19     |
| <b>CELLO</b>  |                                   |           |
| TW331-1A      | Exceptional quality - well flamed | 266.06    |
| TW331-1B      | Professional grade - well flamed  | 201.03    |
| TW331-1C      | Very good quality - flamed        | 147.81    |
| TW331-1D      | Good quality - lightly flamed     | 106.43    |



## NECKS WITH SCROLL

| no.           | description                        | net price |
|---------------|------------------------------------|-----------|
| <b>VIOLIN</b> |                                    |           |
| TW132-1A      | Exceptional quality - well flamed  | 124.16    |
| TW132-1B      | Professional grade - well flamed   | 85.20     |
| TW132-1C      | Very good quality - flamed         | 70.95     |
| TW132-1D      | Good quality - lightly flamed      | 37.28     |
| TW132-2D      | Good quality - lightly flamed, 3/4 | 37.28     |
| TW132-1E      | Student quality - plain            | 40.31     |
| <b>VIOLA</b>  |                                    |           |
| TW232-1A      | Exceptional quality - well flamed  | 153.73    |
| TW232-1B      | Professional grade - well flamed   | 112.34    |
| TW232-1C      | Very good quality - flamed         | 82.78     |
| TW232-1D      | Good quality - lightly flamed      | 47.93     |
| TW232-1E      | Student quality - plain            | 75.62     |
| <b>CELLO</b>  |                                    |           |
| TW332-1A      | Exceptional quality - well flamed  | 585.75    |
| TW332-1C      | Very good quality - flamed         | 230.59    |
| TW332-1D      | Good quality - lightly flamed      | 177.38    |
| TW332-1E      | Student quality - plain - 4/4      | 135.99    |
| TW332-2E      | Student quality - plain - 3/4      | 135.99    |
| TW332-3E      | Student quality - plain - 1/2      | 135.99    |
| TW332-4E      | Student quality - plain - 1/4      | 121.33    |

**NECKS WITH SCROLL & FINGERBOARD  
NEXT PAGE ...**





**NECKS WITH SCROLL & FINGERBOARD**

| no.           | description                         | net price |
|---------------|-------------------------------------|-----------|
| <b>VIOLIN</b> |                                     |           |
| TW133-1A      | Exceptional quality - highly flamed | 505.88    |
| TW133-1B      | Professional grade - well flamed    | 260.93    |
| TW133-1C      | Very good quality - flamed          | 181.05    |
| TW133-1C5     | Like above, 5-string                | 202.35    |
| TW133-1D      | Good quality - lightly flamed       | 165.08    |
| TW133-1D5     | Like above, 5-string                | 186.38    |
| TW133-1E      | Student quality - plain             | 149.10    |
| <b>VIOLA</b>  |                                     |           |
| TW233-1B      | Professional grade - well flamed    | 287.55    |
| TW233-1C      | Very good quality - flamed          | 181.05    |
| TW233-1C5     | Like above, 5-string                | 239.63    |
| TW233-1E      | Student quality - plain             | 186.38    |
| <b>CELLO</b>  |                                     |           |
| TW333-1A      | Exceptional quality - well flamed   | 931.88    |
| TW333-1C      | Very good quality - flamed          | 766.80    |
| TW333-1D      | Good quality - lightly flamed       | 654.98    |
| TW333-1E      | Student quality - plain             | 575.10    |



**ALL WOOD SOLD ON THESE PAGES IS EUROPEAN**

**ORDER ONLINE !!**  
[www.howardcore.com](http://www.howardcore.com)

**RIBS (SIDES) BENT**

| no.           | description                        | net price |
|---------------|------------------------------------|-----------|
| <b>VIOLIN</b> |                                    |           |
| TW141-1B      | Professional grade - highly flamed | 63.90     |
| TW141-1D      | Good quality - lightly flamed      | 38.34     |
| TW141-1E      | Student quality - plain            | 24.50     |
| <b>VIOLA</b>  |                                    |           |
| TW241-1E      | Student quality - plain            | 28.76     |
| <b>CELLO</b>  |                                    |           |
| TW341-1C      | Very good quality - flamed         | 170.40    |



**RIBS (SIDES) STRAIGHT**

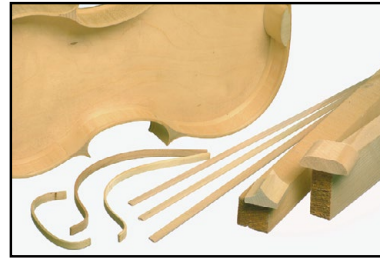
| no.                                | description                       | net price |
|------------------------------------|-----------------------------------|-----------|
| <b>VIOLIN</b>                      |                                   |           |
| TW140-1A                           | Exceptional quality - well flamed | 47.86     |
| TW140-1B                           | Professional grade - well flamed  | 31.10     |
| TW140-1C                           | Very good quality - flamed        | 11.96     |
| TW140-1D                           | Good quality - lightly flamed     | 5.99      |
| TW140-1E                           | Student quality - plain           | 3.36      |
| TW140-1F                           | Mismatched sets                   | 1.20      |
| <b>VIOLA</b>                       |                                   |           |
| TW240-1A                           | Exceptional quality - well flamed | 57.42     |
| TW240-1B                           | Professional grade - well flamed  | 35.89     |
| TW240-1C                           | Very good quality - flamed        | 13.29     |
| TW240-1D                           | Good quality - lightly flamed     | 6.65      |
| TW240-1E                           | Student quality - plain           | 6.83      |
| TW240-1F                           | Mismatched sets                   | 1.20      |
| <b>CELLO</b>                       |                                   |           |
| TW340-1A                           | Exceptional quality - well flamed | 179.46    |
| TW340-1B                           | Professional grade - well flamed  | 113.65    |
| TW340-1C                           | Very good quality - flamed        | 77.76     |
| TW340-1D                           | Good quality - lightly flamed     | 53.83     |
| TW340-1E                           | Student quality - plain           | 29.91     |
| <b>BASS - LIMITED AVAILABILITY</b> |                                   |           |
| TW440-1B                           | Professional grade - well flamed  | 287.13    |
| TW440-1C                           | Very good quality - flamed        | 221.33    |
| TW440-1D                           | Good quality - lightly flamed     | 155.53    |
| TW440-1E                           | Student quality - plain           | 107.67    |

WOOD



**LININGS**

| no.   | description          | net price |
|-------|----------------------|-----------|
| TW150 | Violin, straight.    | 4.73      |
| TW152 | Violin, BENT. 12 pc. | 38.34     |
| TW350 | Cello, straight      | 12.78     |
| TW352 | Cello, BENT. 12 pc.  | 90.53     |

**BLOCKS**

| no.     | description                       | net price |
|---------|-----------------------------------|-----------|
| TW160-1 | 40 x 5.5 x 2 cm                   | 7.10      |
| TW160-2 | 40 x 3 x 3 cm                     | 7.10      |
| TW160-3 | 12 x 2.5 x 4.5 cm                 | 6.33      |
| TW160-4 | 6 pc. block set, pre-cut (violin) | 15.98     |
| TW260   | 6 pc. block set, pre-cut (viola)  | 20.24     |
| TW360-1 | 50 x 12 x 3 cm                    | 17.74     |
| TW360-2 | 50 x 5 x 5 cm                     | 17.74     |
| TW360-3 | 23 x 4 x 6 cm                     | 15.00     |

**GARLANDS**

| no.       | description       | net price |
|-----------|-------------------|-----------|
| TW342-1   | Cello garland 4/4 | 1,777.68  |
| TW342-178 | Cello garland 7/8 | 1,223.80  |

**PURFLING****VIOLIN**

thickness in mm

| no.  | description                                  | black | white | black | net price |
|------|--|-------|-------|-------|-----------|
| W11  | Straight, Fiber/maple/fiber, 3 pcs. per set. | 0.30  | 0.80  | 0.30  | 6.72      |
| W12M | Straight, Maple/maple/maple, 3 pcs. per set. | 0.30  | 0.80  | 0.30  | 7.62      |
| W12P | Straight, Maple/pearwood/maple, 3 pcs. set.  | 0.30  | 0.80  | 0.30  | 8.89      |
| W14  | Bent, Ebony/maple/ebony, 12 pcs. per set.    | 0.31  | 0.65  | 0.31  | 133.11    |

**VIOLA**

|        |  |      |      |      |       |
|--------|--|------|------|------|-------|
| W11VA  | Straight, Fiber/maple/fiber, 3 pcs. per set.   | 0.30 | 0.80 | 0.30 | 7.27  |
| W12VAM | Straight, Maple/maple/maple, 3 pcs. per set.   | 0.30 | 0.80 | 0.30 | 7.80  |
| W12VAP | Straight, Maple/pearwood/maple, 3 pc. per set. | 0.30 | 0.80 | 0.30 | 9.44  |
| W14VA  | Bent, Ebony/maple/ebony, 12 pcs. per set.      | 0.40 | 0.70 | 0.40 | 89.08 |

**CELLO**

|       |   |      |      |      |        |
|-------|---|------|------|------|--------|
| W11C  | Straight, Fiber/maple/fiber, 7 pcs, per set.  | 0.50 | 1.00 | 0.50 | 18.69  |
| W12C  | Straight, Maple/maple/maple, 7 pcs. per set.  | 0.50 | 1.00 | 0.50 | 19.95  |
| W12CP | Straight, Maple/pearwood/maple, 7 pc. per set | 0.50 | 1.00 | 0.50 | 23.40  |
| W14C  | Bent, Ebony/maple/ebony, 12 pcs. per set.     | 0.50 | 0.90 | 0.50 | 148.46 |



**MAPLE HAS WHITE MIDDLE, PEARWOOD HAS LIGHT TAN MIDDLE. MEASUREMENTS MAY VARY SLIGHTLY.**



**BOXWOOD PEGHOLE BUSHINGS**

**VIOLIN/VIOLA**



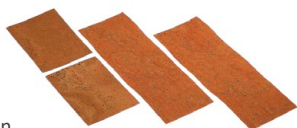
| no.                | description                              | net each |
|--------------------|--|----------|
| BUSH1              | Boxwood, tapered to fit our peg shapers. | 2.03     |
| BUSHM1             | Maple.                                   | 2.03     |
| BUSHB1-CYLINDRICAL | Boxwood, cylindrical.                    | 2.92     |
| BUSHM1-CYLINDRICAL | Maple, cylindrical.                      | 5.49     |

**CELLO**

|                    |  |      |
|--------------------|--|------|
| BUSH3              | Boxwood, tapered to fit our peg shapers. | 2.58 |
| BUSHM3             | Maple.                                   | 2.58 |
| BUSHB3-CYLINDRICAL | Boxwood, cylindrical.                    | 5.79 |
| BUSHM3-CYLINDRICAL | Maple, cylindrical.                      | 7.21 |

**CORK SHEETS**

**VIOLIN/VIOLA**



| no.      | description                             | net each |
|----------|---|----------|
| C11-7    | Top quality cork sheet, 1/16". 4" x 6". | 12.54    |
| C11-8    | Same as above, 1/32" sheet. 4" x 6".    | 10.97    |
| GW434930 | 1 1/2" x 5" sheet                       | 1.26     |

**SPRUCE BASS BARS**

**VIOLIN 300 X 20 X 8**



| no.    | description      | net price |
|--------|------------------|-----------|
| BB1IA  | Selected quality | 8.32      |
| BB1    | Good quality     | 5.38      |
| BB1-II | Lowest quality   | 2.27      |

**VIOLA 350 X 20 X 8**

|        |                  |      |
|--------|------------------|------|
| BB2IA  | Selected quality | 9.03 |
| BB2    | Standard quality | 6.34 |
| BB2-II | Lowest quality   | 2.63 |

**CELLO 630 X 35 X 12**

|        |                  |       |
|--------|------------------|-------|
| BB3IA  | Selected quality | 21.48 |
| BB3    | Standard quality | 10.71 |
| BB3-II | Lowest quality   | 5.56  |

**BASS 900 X 50 X 30**

|        |                  |       |
|--------|------------------|-------|
| BB4IA  | Selected quality | 50.97 |
| BB4    | Standard quality | 25.48 |
| BB4-II | Lowest quality   | 12.44 |

**SOUNDPOSTS**

**VIOLIN**



| no.      | description                             | net each |
|----------|---|----------|
| SW1IA    | Selected quality. 4/4 (6.2 mm - 6.3 mm) | 10.77    |
| SW1IA-2  | Selected quality. 3/4 (5.7 mm - 5.8 mm) | 10.77    |
| SW1IA-3  | Selected quality. 1/2 (5.4 mm - 5.5 mm) | 10.77    |
| SW1IA-4  | Selected quality. 1/4 (5.2 mm - 5.3 mm) | 10.77    |
| SW1-1    | Better quality. 4/4 (6.2 mm - 6.3 mm)   | 6.58     |
| SW1-2    | Better quality. 3/4 (5.7 mm - 5.8 mm)   | 6.58     |
| SW1-3    | Better quality. 1/2 (5.4 mm - 5.5 mm)   | 6.58     |
| SW1-4    | Better quality. 1/4 (5.2 mm - 5.3 mm)   | 6.58     |
| SW1-5    | Better quality. 1/8 (4.7 mm - 4.8 mm)   | 6.58     |
| SW1-II-1 | Standard quality. 4/4 (6.2 mm - 6.3 mm) | 5.02     |
| SW1-II-2 | Standard quality. 3/4 (5.7 mm - 5.8 mm) | 5.02     |
| SW1-II-3 | Standard quality. 1/2 (5.4 mm - 5.5 mm) | 5.02     |
| SW1-II-4 | Standard quality. 1/4 (5.2 mm - 5.3 mm) | 5.02     |
| SW1-II-5 | Standard quality. 1/8 (4.7 mm - 4.8 mm) | 5.02     |

**VIOLA**

|          |                                 |       |
|----------|---------------------------------|-------|
| SW2IA    | Selected quality. 4/4 (7.0 mm). | 11.66 |
| SW2IA-2  | Selected quality. 3/4 (6.5 mm). | 11.66 |
| SW2      | Better quality. 4/4 (7.0 mm).   | 7.36  |
| SW2-2    | Better quality. 3/4 (6.5 mm).   | 7.36  |
| SW2-II   | Standard quality. 4/4 (7.0 mm). | 5.74  |
| SW2-II-2 | Standard quality. 3/4 (6.5 mm). | 5.74  |

**CELLO**

|          |                                  |       |
|----------|----------------------------------|-------|
| SW3IA-1  | Selected quality. 4/4 (11 mm).   | 16.39 |
| SW3IA-12 | Selected quality. 12 mm          | 16.39 |
| SW3IA-13 | Selected quality. 13 mm          | 16.39 |
| SW3IA-2  | Selected quality. 3/4 (10.5 mm)  | 15.73 |
| SW3IA-3  | Selected quality. 1/2 (9.5 mm).  | 15.73 |
| SW3-1    | Better quality. 4/4 (11 mm).     | 9.69  |
| SW3-1-12 | Better quality. 4/4 (12 mm).     | 9.69  |
| SW3-1-13 | Better quality. 4/4 (13 mm).     | 9.69  |
| SW3-2    | Better quality. 3/4 (10.5 mm).   | 9.69  |
| SW3-3    | Better quality. 1/2 (9.5 mm).    | 9.69  |
| SW3-4    | Better quality. 1/4 (9.0 mm).    | 9.69  |
| SW3-II-1 | Standard quality. 4/4 (11 mm).   | 8.67  |
| SW3-II-2 | Standard quality. 3/4 (10.5 mm). | 8.67  |
| SW3-II-3 | Standard quality. 1/2 (9.5 mm).  | 8.67  |

**BASS** - Bass soundpost wood is: 3/4 = 19 mm; 1/2 = 16 mm

|          |                       |       |
|----------|-----------------------|-------|
| SW4IA-2  | Selected quality. 3/4 | 19.44 |
| SW4IA-3  | Selected quality. 1/2 | 19.44 |
| SW4-2    | Better quality. 3/4   | 12.86 |
| SW4-3    | Better quality. 1/2   | 12.86 |
| SW4-4    | Better quality. 1/4   | 12.86 |
| SW4-5    | Better quality. 1/8   | 12.86 |
| SW4-6    | Better quality. 1/10  | 12.86 |
| SW4-II-2 | Standard quality. 3/4 | 10.41 |
| SW4-II-3 | Standard quality. 1/2 | 10.41 |

Violin, viola and cello soundpost sticks all approximately 400 mm long. Bass soundpost sticks approximately 300 mm long.

Each stick yields 6 posts for violin/viola, 2 cello, 1 bass.



## FINGERBOARDS

## VIOLIN

| no.                 | description                             | NET    |
|---------------------|---|--------|
| VF10-1A             | "A" quality ebony. Indian. 4/4.         | 27.72  |
| VF10-1B             | "B" quality ebony. Indian. 4/4.         | 19.40  |
| VF10-1C             | "C" quality ebony. Indian. 4/4.         | 11.09  |
| VF10-2B             | "B" quality ebony. Indian. 3/4.         | 19.40  |
| VF10-3B             | "B" quality ebony. Indian. 1/2.         | 19.40  |
| VF10-4B             | "B" quality ebony. Indian. 1/4.         | 19.40  |
| <b>German Made:</b> |   |        |
| VFH                 | Hardwood stained black. 1/8 - 4/4.      | 19.62  |
| VF01                | Lower grade ebony. 4/4.                 | 29.95  |
| VF1                 | Fine ebony. 1/8 - 4/4.                  | 42.47  |
| VF1P                | Polished ebony. 4/4.                    | 49.53  |
| VF2                 | Better ebony. 4/4.                      | 61.33  |
| VF3                 | Finest ebony. 4/4.                      | 80.93  |
| VFIA                | Selected Ceylon ebony. 4/4.             | 100.90 |
| VFV                 | Five string violin, quality like VF 1P. | 59.66  |

## VIOLA

| no.                 | description                     | NET    |
|---------------------|---------------------------------|--------|
| VLF20-1A            | "A" quality ebony. Indian. 4/4. | 33.26  |
| VLF20-1B            | "B" quality ebony. Indian. 4/4. | 23.28  |
| VLF20-1C            | "C" quality ebony. Indian. 4/4. | 13.30  |
| <b>German Made:</b> |                                 |        |
| VLF1                | Good ebony.                     | 50.97  |
| VLF3                | Finest ebony.                   | 97.14  |
| VLFIA               | Selected Ceylon ebony.          | 121.10 |

## CELLO

| no.                 | description                            | NET    |
|---------------------|--|--------|
| CF30-1A             | "A" quality ebony, round. Indian. 4/4. | 138.58 |
| CF30-1B             | "B" quality ebony, round. Indian. 4/4. | 110.86 |
| CF30-2B             | "B" quality ebony, round. Indian. 3/4. | 110.86 |
| CF30-3B             | "B" quality ebony, round. Indian. 1/2. | 110.86 |
| CF31-1A             | "A" quality ebony, bevel. Indian. 4/4. | 138.58 |
| CF31-1B             | "B" quality ebony, bevel. Indian. 4/4. | 110.86 |
| CF31-1C             | "C" quality ebony, bevel. Indian. 4/4. | 55.43  |
| <b>German Made:</b> |  |        |
| CFH                 | African hardwood, natural. 1/4.        | 105.97 |
| CF01                | Lower grade ebony. 3/4.                | 220.77 |
| CF1                 | Good ebony. 4/4, 1/2.                  | 214.53 |
| CF2                 | Better ebony. 4/4.                     | 346.89 |

## PLEASE NOTE:

Ebony is getting more scarce and is becoming more difficult to source. You must expect to see brown streaks in most lower priced fingerboards today. Even the best ebony will sometimes have less than perfect black. We sell the finest now made from all around the world so you can be certain that what you receive is the best possible in that particular price range.



## BASS

| no.                 | description                            | NET    |
|---------------------|--|--------|
| BF40-1A             | "A" quality ebony, round. Indian. 4/4. | 388.02 |
| BF40-2A             | "A" quality ebony, round. Indian. 3/4. | 388.02 |
| BF40-2B             | "B" quality ebony, round. Indian. 3/4. | 291.02 |
| BF40-2C             | "C" quality ebony, round. Indian. 3/4. | 207.87 |
| BF41-1B             | "B" quality ebony, bevel. Indian. 4/4. | 291.02 |
| BF41-2A             | "A" quality ebony, bevel. Indian. 3/4. | 388.02 |
| BF41-2B             | "B" quality ebony, bevel. Indian. 3/4. | 291.02 |
| BF41-2C             | "C" quality ebony, bevel. Indian. 3/4. | 207.87 |
| BF41-3B             | "B" quality ebony, bevel. Indian. 1/2. | 291.02 |
| <b>German Made:</b> |  |        |
| BF1                 | Good ebony. 1/4.                       | 446.85 |



## SADDLES

| no.  | description        | NET  |
|------|--------------------|------|
| SA1  | Violin, finished   | 1.33 |
| SA2  | Viola, finished    | 1.33 |
| SA3  | Cello, finished    | 4.05 |
| SA4  | Bass, finished     | 7.65 |
| SA10 | Violin, unfinished | 0.72 |
| SA20 | Viola, unfinished  | 0.72 |
| SA30 | Cello, unfinished  | 3.11 |
| SA40 | Bass, unfinished   | 5.88 |

## FINGERBOARD NUTS, EBONY

| no.  | description        | NET  |
|------|--------------------|------|
| FN1  | Violin, finished   | 1.22 |
| FN2  | Viola, finished    | 1.22 |
| FN3  | Cello, finished    | 3.51 |
| FN4  | Bass, finished     | 6.97 |
| FN10 | Violin, unfinished | 0.72 |
| FN20 | Viola, unfinished  | 0.72 |
| FN30 | Cello, unfinished  | 3.11 |
| FN40 | Bass, unfinished   | 5.88 |



**CORE SHOP APRON**

| no.        | NET   |
|------------|-------|
| CORE-APRON | 35.00 |



*The smell of the workshop, the feel of old wood...*

If you're like us, these are more than just pictures - they're a way of life!

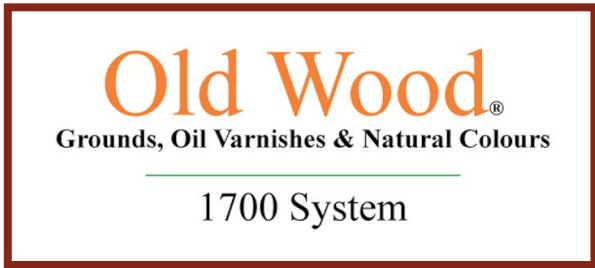
At Howard Core Company, we go to great lengths to ensure that our products are of the highest quality and will fulfill your needs when you are giving your valuable time and effort to your next masterpiece.

Whether the instrument you are repairing is student or master quality, we have what you need to do the job! If you don't see what you need in these pages, call us!



WOOD

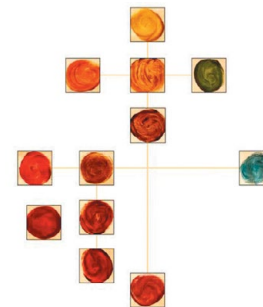




**These finishing products are causing quite a stir among discerning luthiers and woodworking craftsmen. Based upon the original recipes of the old Italian violin-makers, the 1700 System utilizes grounds to prepare the wood, then a special varnish used in tandem with its organic pigment glaze to give the wood a rich, beautiful finish. Made in Spain.**

**WHY SHOULD YOU BUY THE OLD WOOD 1700 SYSTEM?**

- 1. ADDS VALUE TO THE INSTRUMENT** - the 1700 system provides the instrument with an elegant and extraordinary look, adding depth, tone, and a dichromatic effect, enhancing the wood.
- 2. SAVES TIME** - Everything needed to finish the instrument is right here! Also, no milling of colors (hours saved!)
- 3. RELIABILITY** - Homogeneous results, every time - no color variations.
- 4. COST-PERFORMANCE RATIO** - when properly used, the cost of the Old Wood 1700 system is generally between 1% and 5% of the total cost of the instrument! See below for how many instruments can be finished with one 60 cc bottle of:  
 Italian Golden Ground - 10 violins; Imprimatura - 6 violins; Doratura - 8 violins;  
 any Oil Natural Color - 10-11 violins; Varnish - 5 violins.



**WE HAVE USED THIS SYSTEM IN OUR OWN SHOP, WITH TREMENDOUS RESULTS!!**



**OWG1**



**OWG2**



**OWG3**



**OWV1**



**OWV4**

**GROUNDS**

| no.      | description   | qty    | \$-NET |
|----------|---|--------|--------|
| OWG1-60  | Set of Italian Golden Grounds A and B, one 60 cc bottle of each.  | 60 cc  | 120.00 |
| OWG1-125 | Set of Italian Golden Grounds A and B, one 125 cc bottle of each. | 125 cc | 217.50 |
| OWG2-35  | Imprimatura Minerale, 35 ml.                                      | 35 ml  | 48.00  |
| OWG3-35  | Grounds, Doratura Minerale 170                                    | 35 ml  | 43.50  |

**OIL VARNISHES**

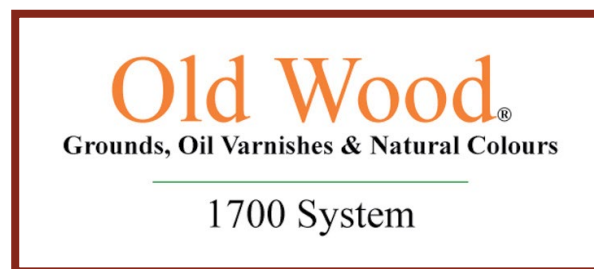
| no.  | description             | qty   | \$-NET | qty    | \$-NET |
|------|-------------------------|-------|--------|--------|--------|
| OWV1 | Classical Amber Varnish | 60 cc | 78.00  | 125 cc | 124.50 |
| OWV4 | Brescia Brown Varnish   | 60 cc | 97.50  | 125 cc | 160.50 |
| OWV5 | Cremona Varnish         | 60 cc | 78.00  | 125 cc | 124.50 |

**SPECIFY AMOUNT WHEN ORDERING !!**

FINISHING



| no.     | description   | qty   | \$-NET |
|---------|---|-------|--------|
| OWG4-30 | Refractive ground, transparent pale color liquid to generate optical effect of depth. | 30 cc | 39.00  |
| OWG4-60 | Refractive ground, transparent pale color liquid to generate optical effect of depth. | 60 cc | 69.00  |



**OIL NATURAL COLORS**

| no.   | description               | qty   | \$-NET |
|-------|---------------------------|-------|--------|
| OWC1  | Weld - Indian Yellow      | 20 cc | 118.50 |
| OWC2  | Cosmos - Golden Yellow    | 20 cc | 127.50 |
| OWC3  | Cosmos - Golden Oak       | 20 cc | 130.50 |
| OWC4  | Pernambuco - Golden Brown | 20 cc | 133.50 |
| OWC5  | Madder Lake - Red         | 20 cc | 121.50 |
| OWC6  | Madder Lake - Brown Red   | 20 cc | 133.50 |
| OWC7  | Sorghum - Venetian Red    | 20 cc | 130.50 |
| OWC8  | Cochineal - Dark Violet   | 20 cc | 121.50 |
| OWC9  | Lac Dye - Cherry Red      | 20 cc | 136.50 |
| OWC10 | Walnut - Dark Brown       | 20 cc | 130.50 |
| OWC11 | Chlorophyll - Green       | 20 cc | 133.50 |
| OWC12 | Indigo - Blue             | 20 cc | 130.50 |



**FOR FURTHER INFORMATION:**

Since we do not finish instruments ourselves, our knowledge of techniques, formulas, etc. is necessarily "second hand", and we do not feel qualified to give advice. There are several excellent books on this subject which we can recommend and they are:

- Violin Varnishes by Hammerl. They make the products! (see pg. I-6)
- Sections of Art and Method of the Violinmaker, Violinmakers Notebook, and Violin Making Step by Step books by Henry Strobel also contain worthwhile varnishing information. (pg. I-8)

All these books, plus many more, are available from us. Please look in the book section of this catalog.

**DOWNLOAD MORE INFORMATION  
ABOUT THE OLD WOOD SYSTEM  
FROM OUR WEBSITE!**



## STAINS AND PRIMERS

If the unfinished instrument is to have a beautiful basic color, it should be stained before varnishing. But since the hardness of wood can vary, thus absorbing the stain unevenly, it is recommended that the basic instrument should be pre-treated first to ensure that the color is attractively even.

### INSTRUCTIONS FOR PRE-TREATING THE WOOD

Dissolve about 30 g of gelatin powder in a liter of warm water and then heat until the solution is clear and thin. Apply the warm solution evenly with a bristle brush, leave to dry completely and sand down very carefully with a fine sandpaper. The various stains described below can then be applied.

### INSTRUCTIONS FOR APPLICATION OF WATER-BASED STAINS

Water-based stains are available in some twenty shades. Dissolve contents of the bag, following the instructions on the label. To make the color lighter or deeper, change the proportion of water used. Apply the stain solution evenly to the cleanly sanded instruments using a sponge or brush. Wipe off excess stain with a dry rag.

#### JOHA® ANTIQUE STAIN #421

Stain #421 - antique gray-brown is a ready-mixed oxidation stain. After application, the color changes under the effect of air and daylight from being colorless to antique gray-brown. This stain is applied exactly as described above. Once the required color has been reached, gently sand with a fine sandpaper and apply one coat of basic varnish. This prevents further modification of the color. Ideally, one should carry out a test stain and varnish to see what the final result will be, since the colors will vary with different types of wood. This stain particularly draws out timber rings.

#### JOHA® STAIN #423 & JOHA® STAIN #402 M

Stain #402 M is a rich brown, ready-made stain which should be used if a dark instrument is required. Stain #423 is a ready-made orange stain made from natural dyes. Use as water-based stains.

## AN INTRODUCTION TO OUR VARNISHES:

### SPIRIT VARNISH

Spirit varnish has always been the varnish most commonly used for stringed instruments. It dries quickly, thus allowing a daily coating. The varnish must be applied quickly, however, in order to prevent the varnish from clouding, especially on color varnish. Every coat must be thoroughly dried before the next coat is applied in order to prevent cracks from materializing later. (Press hard on the varnish with your thumb for a few seconds. If it fails to make a print, then you can apply the next coat.) Spirit varnish can be smoothed well with pumice stone or rottenstone and polished.

### PROPOLIS MIXED VARNISH

This is an Italian type varnish which, in spite of being a very soft varnish, dries well. After it has been left to dry for a few days it polishes very well. As the name suggests this varnish is partly made up of propolis and is particularly fine quality. Its natural color is an antique yellow. This varnish should be smoothed with rottenstone and polished after it has dried completely, at least 30 days.

### OIL VARNISH, STANDARD QUALITY

This varnish applies very well. It should be diluted a bit with balsam turpentine (the thinner that is listed with the oil varnishes), despite the fact that it takes a little longer to dry. (Test this also with your thumb to see if it is dry.) Contrary to popular opinion, in the long run, this varnish actually becomes somewhat harder than spirit varnish. You can smooth this varnish with pumice stone or rottenstone and work it to a gentle shine with polish and oil.

### VOLATILE OIL VARNISH

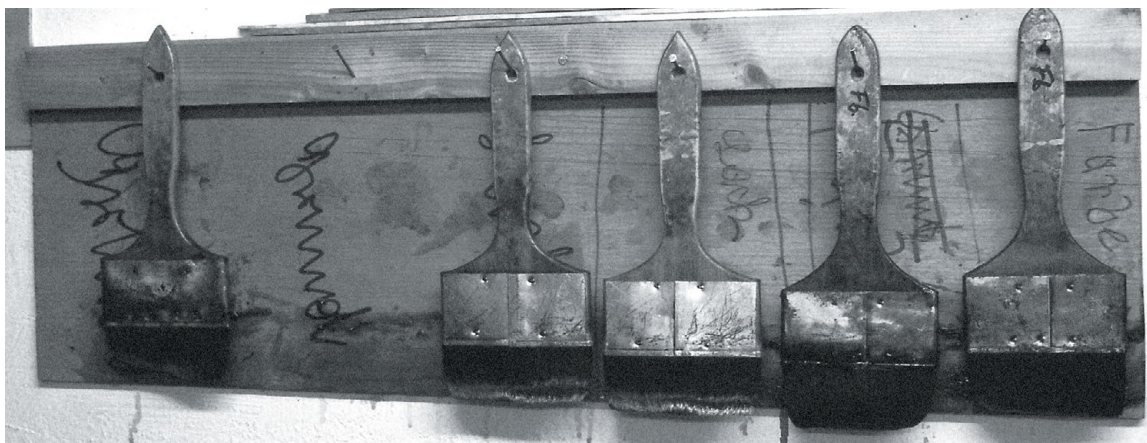
An outstanding oil varnish made with balsams and volatile oils which dries much faster than normal oil varnishes. As a result, however, it is not as easy to apply as normal oil varnish. Because it contains propolis, it stays elastic for a long time and allows the wood to vibrate properly. However, this means that volatile oil varnish may remain sensitive to heat and pressure even after years. After the last coat has dried (thirty days to six weeks) the volatile oil varnish can be smoothed with tripoli powder and polished.

### RETOUCHING VARNISH

This is ideal for repairing damaged varnish on musical instruments. It is made using selected resins and a special solvent, thus providing excellent adhesion to damaged areas. In order to achieve better cover, retouching varnish has a slightly stronger color. The composition of this special varnish means it is ideal for repairs both to spirit and oil varnishes. The special thinner must be used with the retouching varnish. All colors can be mixed with each other. This varnish should be thickly dabbed or applied to the area to be repaired; leave to dry completely and then sand smooth to match the remaining varnish.

### COLOR EXTRACT

Color extract is a liquid, light-resistant, transparent color for tinting colorless varnishes, although it can also be used with all other spirit, oil and synthetic resin varnishes. The colors can be mixed with each other, so that any desired shade may be matched. The liquid may be added directly to the varnish. This color extract is superior to spirit and oil soluble powders as it is much more resistant to light.





A list of dyeing resins, their color and solvents is shown below. This is a general overview and is intended as a guide. Please experiment yourself, using potash, ammonia solution, iron chloride, etc. A detailed description of the resins and dyeing resins is given in the book "VIOLIN VARNISH" by Hammerl. (See book section - item # BOOKH102.)

| DYEING RESIN                         | COLOR  | SOLVENT                                  | COMMENTS  |
|--------------------------------------|--|--|---|
| Acaroid Resin                        | red  | spirit                                   |   |
| Alkanna Root<br>or alkanet           | red  | spirit<br>turpentine<br>volatile oils    | may turn slightly bluish  |
| Alicarin = madder                    | as for madder root but more<br>highly concentrated |  |   |
| Aloe                                 | yellowish-brown to brown                           | spirit<br>water                          | heat to dissolve<br>heat to dissolve  |
| Asphalt                              | brown  | spirit - acetone mixture<br>add spirit   | make into paste   |
| Logwood extract                      | black  | water                                    | Boil up logwood extract +<br>iron vitriol. Place wood in<br>solution and if possible<br>boil with it. |
| Campeachy Wood<br>aka fogwood        | dark red<br>yellow                                 | water<br>spirit                          | heat to dissolve<br>heat to dissolve  |
| Catechu                              | warm brown<br>brown to red-brown                   | water<br>spirit                          | heat to dissolve<br>heat to dissolve  |
| Cochineal                            | red  | spirit + spike oil                       | Reduce to powder and<br>heat to dissolve. Caution:<br>easily turns violet.                            |
| Curcuma Root                         | yellow   | spirit                                   | heat to dissolve  |
| Dragon's Blood                       | red  | spirit<br>volatile oils                  | heat to dissolve<br>heat to dissolve  |
| Safflower                            | yellowish-orange<br>yellow<br>reddish-yellow       | water + soda<br>water + potash<br>spirit | boil up<br>boil up<br>heat to dissolve  |
| Pernambuco or redwood                | Yellowish-brown to reddish-brown<br>golden yellow  | water + potash<br>spirit                 | boil up<br>heat to dissolve   |
| Gallnut                              | black  | water + iron chloride                    | boil up   |
| Yellow Wood Extract<br>liquid        | yellow<br>yellow                                   | spirit<br>water                          | readily soluble   |
| Guaiacum                             | brown  | spirit                                   | heat to dissolve  |
| Gambage                              | yellow   | spirit                                   | heat to dissolve<br>Caution: TOXIC!   |
| Kamala                               | golden orange<br>orange                            | spirit<br>water + potash                 | heat to dissolve<br>heat to dissolve; when cool,<br>add ammonia solution                              |
| Madder Root                          | red  | spirit                                   | prepare first in a small<br>amount of ammonia solution  |
| Orlean                               | yellow<br>orange-red                               | water<br>spirit                          | heat to dissolve<br>heat to dissolve  |
| Saffron (real saffron)<br>in strands | yellow<br>yellow                                   | spirit<br>water + borax                  | heat to dissolve<br>heat to dissolve  |
| Sandalwood                           | red to orange                                      | spirit + copaiva balsam                  | heat to dissolve  |
| Onion Skins                          | old yellow to old gold                             | water + potash or<br>water + soda        | heat to dissolve<br>heat to dissolve  |

**Manufacturer suggestion:**

Please transfer varnish from metal shipping container into glass jar for maximum shelf life.



**ITALIAN BALSAMIC OILS**

The finest varnish from Europe - an old Italian recipe.

| description                   | 100 ml #   | \$-NET | liter # | \$-NET |
|-------------------------------|------------|--------|---------|--------|
| Gold Brown                    | 2426-100ML | 65.34  | 2426L   | 350.96 |
| Italian Amber                 | 2425-100ML | 65.34  | 2425L   | 350.96 |
| Italian Brown                 | 2424-100ML | 65.34  | 2424L   | 350.96 |
| Italian Colorless For Coating | 2430-100ML | 65.34  | 2430L   | 350.96 |
| Italian Colorless For Mixing  | 2420-100ML | 65.34  | 2420L   | 350.96 |
| Italian Gold Yellow           | 2422-100ML | 65.34  | 2422L   | 350.96 |
| Italian Ground Varnish        | 2410-100ML | 65.34  | 2410L   | 350.96 |
| Italian Red                   | 2423-100ML | 65.34  | 2423L   | 350.96 |
| Italian Thinner               | 2440-100ML | 16.34  | 2440L   | 88.28  |
| Italian Yellow                | 2421-100ML | 65.34  | 2421L   | 350.96 |
| Red Brown                     | 2427-100ML | 65.34  | 2427L   | 350.96 |

**SPIRIT VARNISH IA "SILKY" (MATTE FINISH)**

| description              | 100 ml #   | \$-NET | liter # | \$-NET |
|--------------------------|------------|--------|---------|--------|
| Amber                    | 1425-100ML | 32.51  | 1425L   | 144.87 |
| Black                    | 1428-100ML | 32.51  | 1428L   | 144.87 |
| Brown                    | 1424-100ML | 32.51  | 1424L   | 144.87 |
| Colorless Coating        | 1430-100ML | 32.51  | 1430L   | 144.87 |
| Colorless Mixing Varnish | 1420-100ML | 32.51  | 1420L   | 144.87 |
| Golden Brown             | 1426-100ML | 32.51  | 1426L   | 144.87 |
| Golden Yellow            | 1422-100ML | 32.51  | 1422L   | 144.87 |
| Ground Varnish           | 1410-100ML | 32.51  | 1410L   | 144.87 |
| Red                      | 1423-100ML | 32.51  | 1423L   | 144.87 |
| Red Brown                | 1427-100ML | 32.51  | 1427L   | 144.87 |
| Yellow                   | 1421-100ML | 32.51  | 1421L   | 144.87 |

|                          |            |       |  |  |
|--------------------------|------------|-------|--|--|
| Spirit Varnish - 250 ml  | 1400-250ML | 10.23 |  |  |
| Spirit Varnish - 500 ml  | 1400-500ML | 13.53 |  |  |
| Spirit Varnish - 1 liter | 1400L      | 21.29 |  |  |

**PROPOLIS (ITALIAN SPIRIT) VARNISH**

| description                 | 100 ml #   | \$-NET | liter # | \$-NET |
|-----------------------------|------------|--------|---------|--------|
| Natural Ground Varnish      | 1510-100ML | 55.61  | 1510L   | 305.91 |
| Amber Color Varnish         | 1525-100ML | 55.61  | 1525L   | 305.91 |
| Brown Color Varnish         | 1524-100ML | 55.61  | n/a     | n/a    |
| Colorless Color Varnish     | 1520-100ML | 55.61  | 1520L   | 305.91 |
| Golden Brown Color Varnish  | 1526-100ML | 55.61  | n/a     | n/a    |
| Golden Yellow Color Varnish | 1522-100ML | 55.61  | n/a     | n/a    |
| Red Color Varnish           | 1523-100ML | 55.61  | n/a     | n/a    |
| Red Brown Color Varnish     | 1527-100ML | 55.61  | n/a     | n/a    |
| Yellow Color Varnish        | 1521-100ML | 55.61  | n/a     | n/a    |
| Natural Coating Varnish     | 1530-100ML | 55.61  | n/a     | n/a    |

**VOLATILE OIL VARNISH**

(Aetherischen Öllack) A soft, elastic oil varnish of finest quality with balsams, volatile oils, and propolis. Very fast drying.

| description                 | 100 ml #   | \$-NET | liter # | \$-NET |
|-----------------------------|------------|--------|---------|--------|
| Natural Ground Varnish      | 2310-100ML | 51.48  | 2310L   | 284.96 |
| Brown Color Varnish         | 2324-100ML | 51.48  | n/a     | n/a    |
| Colorless Color Varnish     | 2320-100ML | 51.48  | 2320L   | 284.96 |
| Golden Brown Color Varnish  | 2326-100ML | 51.48  | n/a     | n/a    |
| Golden Yellow Color Varnish | 2322-100ML | 51.48  | n/a     | n/a    |
| Red Color Varnish           | 2323-100ML | 51.48  | n/a     | n/a    |
| Red Brown Color Varnish     | 2327-100ML | 51.48  | n/a     | n/a    |
| Yellow Color Varnish        | 2321-100ML | 51.48  | n/a     | n/a    |
| Natural Coating Varnish     | 2330-100ML | 51.48  | 2330L   | 284.96 |
| Thinner (250 ml)            | 2340-250ML | 17.00  | 2340L   | 40.76  |

**250 ml****100 ml****1000 ml****500 ml****Manufacturer suggestion:**

Please transfer varnish from metal shipping container into glass jar for maximum shelf life.

**CONVERSION CHART**

|             |   |              |
|-------------|---|--------------|
| 100 ml      | = | 100 ccm      |
| 100 ml      | = | 3.3824 oz    |
| 250 ml      | = | 8.456 oz     |
| 500 ml      | = | 16.912 oz    |
| 1 liter (l) | = | 1.057 quarts |



**STANDARD OIL VARNISHES & SOLVENTS**

| no.      | description                           | amount  | \$/-NET |
|----------|---------------------------------------|---------|---------|
| 2225     | Amber                                 | 100 ml  | 30.03   |
| 2225L    | Amber                                 | 1 Liter | 129.36  |
| 2228     | Black                                 | 100 ml  | 30.03   |
| 2228L    | Black                                 | 1 Liter | 129.36  |
| 2224     | Brown                                 | 100 ml  | 30.03   |
| 2224L    | Brown                                 | 1 Liter | 129.36  |
| 2210     | Colorless Primer For Oil Varnish      | 100 ml  | 30.03   |
| 2210L    | Colorless Primer For Oil Varnish      | 1 Liter | 129.36  |
| 2230     | Colorless, For Coating                | 100 ml  | 30.03   |
| 2230L    | Colorless, For Coating                | 1 Liter | 129.36  |
| 2220     | Colorless Varnish, For Mixing         | 100 ml  | 30.03   |
| 2220L    | Colorless Varnish, For Mixing         | 1 Liter | 129.36  |
| 2229     | Dark Brown                            | 100 ml  | 30.03   |
| 2229L    | Dark Brown                            | 1 Liter | 129.36  |
| 2226     | Golden Brown                          | 100 ml  | 30.03   |
| 2226L    | Golden Brown                          | 1 Liter | 129.36  |
| 2222     | Golden Yellow                         | 100 ml  | 30.03   |
| 2222L    | Golden Yellow                         | 1 Liter | 129.36  |
| 2223     | Red                                   | 100 ml  | 30.03   |
| 2223L    | Red                                   | 1 Liter | 129.36  |
| 2227     | Red Brown                             | 100 ml  | 30.03   |
| 2227L    | Red Brown                             | 1 Liter | 129.36  |
| 2221     | Yellow                                | 100 ml  | 30.03   |
| 2221L    | Yellow                                | 1 Liter | 129.36  |
| 2240-100 | Solvent (Thinner)                     | 100 ml  | 13.20   |
| 2240-250 | Solvent (Thinner)                     | 250 ml  | 15.84   |
| 2240-500 | Solvent (Thinner)                     | 500 ml  | 24.09   |
| 2601     | Dryer (Desiccative) For Oil Varnishes | 100 ml  | 16.34   |
| 2120L    | Colorless IA                          | 1 liter | 184.64  |

**WATER STAINS**

| no.   | description                                   | \$/-NET |
|-------|---|---------|
| 8421  | Stain 421, brown antique, 100 ml              | 15.02   |
| 8421L | Stain 421, brown antique, 1 liter             | 48.84   |
| 8423  | Stain 423, orange, natural, 100 ml            | 15.84   |
| 8402  | Stain 402, antique, brown, 100 ml             | 15.02   |
| 8431  | Stain ebony, intense, spirit soluble, 100 ml  | 32.51   |
| 8431L | Stain ebony, intense, spirit soluble, 1 liter | 174.24  |
| 8428  | Stain, old gold brown, 100 ml                 | 15.84   |
| 8460  | Nut stain, brown powder, 100 g                | 10.73   |
| 8427  | Stain, boxwood, 100 ml                        | 15.84   |

**TOUCH-UP VARNISH FOR OIL & SPIRIT VARNISH**

| no.   | description                  | \$/-NET |
|-------|------------------------------|---------|
| 1808  | Black, 100 ml                | 34.65   |
| 1804  | Brown, 100 ml                | 34.65   |
| 1800  | Colorless, 100 ml            | 34.65   |
| 1802  | Golden yellow, 100 ml        | 34.65   |
| 1803  | Red, 100 ml                  | 34.65   |
| 1840  | Solvent (thinner), 100 ml    | 14.69   |
| 1840L | Solvent (thinner), 100 liter | 46.20   |
| 1801  | Yellow, 100 ml               | 34.65   |

**STANDARD SPIRIT VARNISHES & SOLVENTS**

| no.        | description              | amount  | \$/-NET |
|------------|--------------------------|---------|---------|
| 1225       | Amber                    | 100 ml  | 28.05   |
| 1225L      | Amber                    | 1 Liter | 109.73  |
| 1228       | Black                    | 100 ml  | 28.05   |
| 1228L      | Black                    | 1 Liter | 109.73  |
| 1224       | Brown                    | 100 ml  | 28.05   |
| 1224L      | Brown                    | 1 Liter | 109.73  |
| 1210       | Colorless ground varnish | 100 ml  | 28.55   |
| 1210L      | Colorless ground varnish | 1 Liter | 122.27  |
| 1310-100ML | Ideal Extra 100          | 100 ml  | 26.73   |
| 1330       | Colorless, for coating   | 100 ml  | 28.05   |
| 1330L      | Colorless, for coating   | 1 Liter | 109.73  |
| 1220       | Colorless, for mixing    | 100 ml  | 28.05   |
| 1220L      | Colorless, for mixing    | 1 Liter | 109.73  |
| 1229       | Dark Brown               | 100 ml  | 28.05   |
| 1229L      | Dark Brown               | 1 Liter | 109.73  |
| 1226       | Golden brown             | 100 ml  | 28.05   |
| 1226L      | Golden brown             | 1 Liter | 109.73  |
| 1222       | Golden yellow            | 100 ml  | 28.05   |
| 1222L      | Golden yellow            | 1 Liter | 109.73  |
| 1223       | Red                      | 100 ml  | 28.05   |
| 1223L      | Red                      | 1 Liter | 109.73  |
| 1227       | Red Brown                | 100 ml  | 28.05   |
| 1227L      | Red Brown                | 1 Liter | 109.73  |
| 1221       | Yellow                   | 100 ml  | 28.05   |
| 1221L      | Yellow                   | 1 Liter | 109.73  |
| 1400-250   | Solvent (thinner)        | 250 ml  | 10.23   |
| 1400-500   | Solvent (thinner)        | 500 ml  | 13.53   |
| 1400L      | Solvent (thinner)        | 1 liter | 21.29   |

**BALSAMS & VOLATILE OILS**

| no.   | description  | \$/-NET |
|-------|--|---------|
| 6170  | Balsam of tolu - pure IA, 100 ml                                   | 51.32   |
| 6005  | Balsam turpentine, 100 ml  | 8.58    |
| 6005L | Balsam turpentine, 1 liter   | 56.60   |
| 6050  | Camphor, natural - Japanese, 100 ml                                | 38.12   |
| 6140  | Castor oil, softener, 100 ml                                       | 14.36   |
| 6010  | Copaiva balsam, pure, 100 ml                                       | 40.76   |
| 6020  | Eucalyptus oil, pure, 100 ml                                       | 39.60   |
| 6180  | Grapeseed oil, 100 ml  | 7.59    |
| 6070  | Lavender oil, pure, IA, 100 ml                                     | 76.89   |
| 6100  | Linseed oil, cold pressed, 250 ml                                  | 16.17   |
| 6090  | Linseed oil, hot processed, 250 ml                                 | 9.41    |
| 6110  | Linseed oil, stand oil - thickens - used to soften varnish, 250 ml | 17.69   |
| 6150  | Oil of rosemary, pure IA, 100 ml                                   | 76.89   |
| 6190  | Spike oil, pure IA, 100 ml   | 76.89   |

**ORDER ONLINE !!**  
[www.howardcore.com](http://www.howardcore.com)



**RESINS FOR MAKING VARNISH**

| no.       | most are in 100 gram quantities              | \$-NET |
|-----------|--|--------|
| 4040-100G | Amber  | 41.42  |
| 4060-100G | Burgundian Resin                             | 32.67  |
| 4110-100G | Buttonlack                                   | 12.71  |
| 4100-100G | Colophony Powder                             | 12.71  |
| 4120-100G | Copal, Manila                                | 10.40  |
| 4070-100G | Dammar                                       | 9.24   |
| 4255-100G | Garnet                                       | 19.31  |
| 4010-100G | Gum Ammoniac                                 | 57.92  |
| 4020-100G | Gum Benzoin, In Chunks W/ Almonds Embedded   | 9.08   |
| 4030-100G | Gum Benzoin, Pure Almond                     | 41.58  |
| 4080-100G | Gum Elemi, Softener For Spirit Varnish       | 18.48  |
| 4160-100G | Gum Mastic, In Tears, Pure, Clear            | 127.05 |
| 4185-100G | Propolis Liquid, Pure                        | 77.55  |
| 4180-100G | Propolis, Bee Resin                          | 102.30 |
| 4090-100G | Resin, Pure, Cut Fine, Clear, Light          | 13.04  |
| 4200-100G | Sandarac, Genuine, 100 Gm                    | 23.43  |
| 4200-500G | Sandarac, Genuine, 500 Gm                    | 105.60 |
| 4150-100G | Seedlac                                      | 13.04  |
| 4150-500G | Seedlac - 500 Grams                          | 57.26  |
| 4260-100G | Shellack, Lemon, Top Quality                 | 13.04  |
| 4220-100G | Shellack, White, Dissolves Clearly, De-Waxed | 20.63  |
| 4280-100G | Sticklac                                     | 18.32  |
| 4290-100G | Venetian Turpentine, Thick Softener          | 12.54  |

**NATURAL DYES FOR MAKING VARNISHES**

| no.       | most are in 100 gram quantities          | \$-NET |
|-----------|--|--------|
| 5040-100G | Asphalt, Syrian, brown                   | 9.08   |
| 5110-100G | Bastard saffron, yellow to yellowish red | 20.30  |
| 5060-100G | Campeachy wood, dark red, yellow         | 12.87  |
| 5070-100G | Catechu, brown                           | 12.87  |
| 5210-10G  | Cochineal red - 10 grams                 | 11.72  |
| 5105-100G | Dragon's blood, powder, red              | 115.50 |
| 5100-100G | Dragon's blood, red                      | 115.50 |
| 5130-100G | Gallnut, for staining black              | 13.70  |
| 5140-100G | Guaiac resin, brown                      | 141.41 |
| 5180-100G | Kamala, yellow to orange                 | 13.04  |
| 5200-100G | Madder root, powder, red                 | 13.70  |
| 5240-100G | Red sandalwood                           | 22.52  |
| 5175-100G | Yellowwood, cut, yellow powder           | 11.72  |



4260



4110



5150



5190



4020



4180



5220



5060



**ANILINE DYES, SOLUBLE IN SPIRIT**

| no.  | 4 gram per package  | NET/pkg |
|------|---------------------|---------|
| 3005 | Amber Yellow        | 14.19   |
| 3050 | Black               | 14.19   |
| 3070 | Blue                | 14.19   |
| 3055 | French Red          | 14.19   |
| 3032 | Golden Brown, Light | 14.19   |
| 3001 | Golden Yellow       | 14.19   |
| 3095 | Green               | 14.19   |
| 3059 | Mahogany Red, Dark  | 14.19   |
| 3058 | Mahogany Red, Light | 14.19   |
| 3027 | Maroon              | 14.19   |
| 3006 | Nut Brown           | 14.19   |
| 3034 | Orange              | 14.19   |
| 3013 | Red Brown           | 14.19   |
| 3056 | Scarlet             | 14.19   |
| 3009 | Warm Brown          | 14.19   |
| 3007 | Yellow              | 14.19   |
| 3002 | Yellow Brown        | 14.19   |



**3001 Gold Yellow**



**3009 Warm Brown**



**3095 Green**

**ANILINE DYES, SOLUBLE IN TURPENTINE FOR OIL VARNISH**

| no.  | 4 grams per package | NET/pkg |
|------|---------------------|---------|
| 3533 | Black               | 14.19   |
| 3536 | Blue                | 14.19   |
| 3535 | Orange              | 14.19   |
| 3532 | Red                 | 14.19   |
| 3531 | Yellow              | 14.19   |

**ANILINE DYES, SOLUBLE IN WATER**

| no.  | description                      | NET/pkg |
|------|----------------------------------|---------|
| 3115 | Amber yellow - 10 grams          | 14.19   |
| 3150 | Black - 10 grams                 | 14.19   |
| 3138 | Blue - 4 grams                   | 14.19   |
| 3157 | French red - 10 grams            | 14.19   |
| 3120 | Golden brown - 10 grams          | 14.19   |
| 3100 | Golden yellow - 10 grams         | 14.19   |
| 3116 | Light oak brown - 10 grams       | 14.19   |
| 3121 | Mahogany brown, light - 10 grams | 14.19   |
| 3156 | Mahogany dark red - 15 grams     | 14.19   |
| 3127 | Maroon - 15 grams                | 14.19   |
| 3104 | Nut brown, dark - 10 grams       | 14.19   |
| 3128 | Old golden brown - 10 grams      | 14.19   |
| 3108 | Old yellow - 10 grams            | 14.19   |
| 3098 | Orange - 10 grams                | 14.19   |
| 3125 | Pure brown - 10 grams            | 14.19   |
| 3135 | Pure yellow - 10 grams           | 14.19   |
| 3169 | Red brown - 10 grams             | 14.19   |
| 3117 | Rosewood brown - 10 grams        | 14.19   |
| 3142 | Scarlet - 4 grams                | 14.19   |
| 3097 | Yellowish light brown - 10 grams | 14.19   |

**NITRO STICKS**

**DISCONTINUED**

The Nitro Stick is a fast drying edge color replacement pen to touch up scratches and dings on string instruments. **THESE ITEMS HAVE BEEN DISCONTINUED - GET THEM WHILE YOU CAN!!**



| no.          | description      | NET  |
|--------------|------------------|------|
| NTS-AMBERBRT | Amber brown tint | 9.00 |
| NTS-BRT      | Brown tint       | 9.00 |
| NTS-DKBRT    | Dark brown tint  | 9.00 |
| NTS-WBR      | Warm brown       | 9.00 |



**ORDER ONLINE !!**  
[www.howardcore.com](http://www.howardcore.com)



**COLOR EXTRACTS (LIQUID)**

For all spirit &amp; oil varnishes we sell.

| no.        | description                         | \$-NET |
|------------|-------------------------------------|--------|
| 2905-100ML | Amber color extract, 100 ml         | 33.17  |
| 2905L      | Amber color extract, 1 liter        | 172.59 |
| 2908-100ML | Black color extract, 100 ml         | 33.17  |
| 2910-100ML | Blue color extract, 100 ml          | 33.17  |
| 2904-100ML | Brown color extract, 100 ml         | 33.17  |
| 2904L      | Brown color extract, 1 liter        | 172.59 |
| 2906-100ML | Golden brown color extract, 100 ml  | 33.17  |
| 2902-100ML | Golden yellow color extract, 100 ml | 33.17  |
| 2909-100ML | Green color extract, 100 ml         | 33.17  |
| 2907-100ML | Red brown color extract, 100 ml     | 33.17  |
| 2903-100ML | Red color extract, 100 ml           | 33.17  |
| 2901-100ML | Yellow color extract, 100 ml        | 33.17  |

**MISCELLANEOUS ITEMS FOR FINISHING & REPAIR**

| no.           | description  | amt.               | \$-NET |
|---------------|--|--------------------|--------|
| AC804         | "Ideal" varnish cleaner  | 30 ml bottle       | 15.15  |
| AC804-LITER   |  | 1 liter            | 85.62  |
| 2602L         | Brush cleaner  | 1 liter            | 28.71  |
| 2602          | Brush cleaner - for all varnishes in this catalog                                      | 100 ml bottle      | 12.71  |
| 8631L         | Fingerboard oil  | 1 liter            | 124.41 |
| 7460          | Gelatin powder, technical  | 100 g              | 9.57   |
| 7470          | Imitor, for antiquing varnished instruments  | 100 grams          | 15.68  |
| 7491          | Iron sulfate - dryer additive for varnishes which also yields an enhanced brown color. | 100 g              | 6.44   |
| 8760          | JOHA buffing paste   | 500 ml             | 39.93  |
| AC806         | JOHA cleaner/polish  | 100 ml bottle      | 17.49  |
| AC806-LITER   |  | 1L bottle          | 59.07  |
| 8630          | JOHA fingerboard oil   | 30 ml bottle       | 19.14  |
| 8611L         | JOHA varnish cleaner   | 1 liter            | 124.41 |
| 8750          | JOHA polishing paste   | 500 ml             | 39.93  |
| AC803         | JOHA Varnish Cleaner   | 30 ml bottle       | 19.14  |
| 7420          | Lycopodium - mixes w/ varnish to fill pores or cracks                                  | 10 g               | 9.90   |
| 2601          | Oil varnish dryer  | 100 ml             | 16.01  |
| 7430          | Potassium silicate - liquid  | 100 ml             | 6.44   |
| AC800D        | Polishing compound. Ideal for mixing with tripoli, rottenstone, or pumice.             | <b>LIST PRICED</b> | 7.00   |
| AC8001-DELUXE | Polishing compound - 1 gallon.   |                    | 160.00 |
| AC8005-DELUXE | Polishing compound - 0.5 gallon.   |                    | 98.00  |

**ABRASIVES & POLISHES**

| no.  | description                             | quantity | \$-NET |
|------|---|----------|--------|
| 7605 | Pumice stone 000 extra fine             | 250 g    | 5.12   |
| 7620 | Rottenstone, fine for buffing (Tripoli) | 250 g    | 6.93   |
| 7640 | Vienna chalk, for bright polishing      | 250 g    | 5.28   |
| 7650 | Polishing oil (use with powders above)  | 250 ml   | 10.07  |

**GEWA VARNISHES**

| no.      | description                      | \$-NET |
|----------|----------------------------------|--------|
| GW464110 | Color Extract For Black, 100 MI  | 25.37  |
| GW464104 | Color Extract For Spirit Varnish | 24.05  |
| GW463450 | Dull Varnish                     | 21.43  |
| GW463800 | Stick Varnish (Stocklack)        | 45.11  |
| GW464290 | Varnish Filler, Spirit Soluble   | 27.57  |

**ORDER ONLINE !!**  
[www.howardcore.com](http://www.howardcore.com)



**STIFF WIPING BRUSH**

With harder bristles for cleaning in corners after buffing.

**DISCONTINUED - WHILE THEY LAST**

| no.  | size   | \$-NET |
|------|--------|--------|
| 9704 | Size 4 | 6.15   |
| 9708 | Size 8 | 10.73  |



**GEWA VARNISHING BRUSHES**

| no.      | description                          | \$-NET |
|----------|--------------------------------------|--------|
| GW464400 | 2.5 cm brush width - Special Edition | 29.18  |
| GW464450 | 4 cm brush width - Special Edition   | 40.98  |
| GW464750 | 10 mm Metal Free glue brush          | 9.50   |
| GW464760 | 14 mm Metal Free glue brush          | 9.50   |



**TOUCH-UP BRUSHES**

| no.      | size  | \$-NET |
|----------|---|--------|
| 9902     | Size 2, pointed synthetic hair. <b>DISCONTINUED</b> | 9.41   |
| 9903     | Size 3, pointed synthetic hair. <b>DISCONTINUED</b> | 9.90   |
| 9904     | Size 4, pointed synthetic hair. <b>DISCONTINUED</b> | 11.22  |
| 9905     | Size 5, pointed synthetic hair. <b>DISCONTINUED</b> | 13.04  |
| 9907     | Size 7, pointed synthetic hair. <b>DISCONTINUED</b> | 17.16  |
| GW464600 | Pointed #2 retouching brush, Red Marten hair        | 8.08   |
| GW464650 | Pointed #4 retouching brush, Red Marten hair        | 11.80  |
| GW464700 | Pointed #6 retouching brush, Red Marten hair        | 22.56  |
| GW464710 | Flat #8 retouching brush, Iltis hair                | 9.40   |
| GW464720 | Flat #12 retouching brush, Iltis hair               | 13.17  |
| GW464730 | Flat #20 retouching brush, Iltis hair               | 31.32  |
| 9802     | Flat tip, 2 mm. <b>DISCONTINUED</b>                 | 12.21  |



**VARNISH BRUSHES**

**SYNTHETIC SQUIRREL**

| no.    | size    | \$-NET |
|--------|---------|--------|
| 9005SS | 1/2 "   | 25.58  |
| 9010SS | 1 "     | 31.35  |
| 9015SS | 1 1/2 " | 45.38  |
| 9020SS | 2 "     | 53.63  |
| 9025SS | 2 1/2 " | 64.85  |
| 9030SS | 3 "     | 75.08  |

**GOAT**

| no.   | size    | \$-NET |
|-------|---------|--------|
| 9205B | 1/2 "   | 19.11  |
| 9210B | 1 "     | 28.21  |
| 9215B | 1 1/2 " | 60.39  |
| 9220B | 2 "     | 62.22  |



FINISHING



## UPDATES TO WOOD &amp; FINISHING PRODUCTS SECTION

| PAGE                  | DATE       | EXPLANATION  |
|-----------------------|------------|--|
| G19                   | 12-22-2016 | RENUMBER SYNTHETIC SQUIRREL BRUSHES - ADD "SS" TO ITEM #   |
| G7                    | 6-6-2017   | ADJUSTED PRICING FOR BASS SOUNDPOSTS   |
| G14-G19               | 1-1-2018   | PRICE INCREASE - MOST FINISHING PRODUCTS   |
| G8                    | 2-1-2018   | PRICE INCREASE - GERMAN FINGERBOARDS   |
| G6                    | 2-1-2018   | PRICE INCREASE - MISC. PURFLING  |
| G6                    | 5-1-2018   | PRICE INCREASE - ITEM #'S W14, W11B  |
| G19                   | 5-1-2018   | PRICE INCREASE - GOAT BRUSHES  |
| G6, G19               | 4-1-2019   | PRICE INCREASE - DICTUM ITEMS (GOAT VARNISH BRUSHES, W11B & W14 PURFLING)  |
| MISC                  | 5-1-2019   | PRICE INCREASE - MISC ITEMS (SOUNDPOSTS, BASS BARS, TONEWOOD)  |
| G6                    | 3-1-2020   | PRICE INCREASE - MISC PURFLING   |
| G8                    | 3-1-2020   | PRICE INCREASE - MISC FINGERBOARDS; NUTS & SADDLES   |
| G7                    | 3-1-2020   | PRICE INCREASE - BUSHINGS  |
| G7                    | 3-16-2020  | PRICE INCREASE - CORK SHEETS C11-7, C11-8  |
| G18                   | 4-22-2020  | DISCONTINUED ITEM #7600-250G   |
| G18                   | 4-22-2020  | ADDED ITEM #7605-250G  |
| G2-G6                 | 6-23-2020  | PRICE INCREASE - MISC TONEWOOD ITEMS   |
| MISC                  | 3-1-2021   | PRICE INCREASE: MOST FINISHING PRODUCTS AND TONEWOODS  |
| G7                    | 4-28-2021  | PRICE CORRECTION: SW4-3, SW4-II-3  |
| G7, G8                | 1-1-2022   | PRICE INCREASE: BUSHINGS, SADDLES, NUTS, FINGERBOARDS (NOT GERMAN)   |
| G2, G3,<br>G4, G5, G7 | 4-8-2022   | PRICE INCREASE: SPRUCE TOP SPLITS, MAPLE BACK SPLITS, NECK BLOCKS, RIBS (STRAIGHT), SPRUCE BASS BARS, SOUNDPOSTS |
|                       | 4-29-2022  | NEW ITEM: 1310-100ML SPIRIT COATING IDEAL EXTRA 100 ML   |
| G10                   | 5-16-2022  | OWG2-50 REPLACED WITH OWG2-35 (35 ML INSTEAD OF 50 ML)   |
| G17                   | 5-16-2022  | ITEM #3534 NO LONGER AVAILABLE   |
| G15                   | 7-16-2022  | PRICE CHANGE: OIL VARNISHES ITEMS 2210 - 2230  |
| G14-G19               | 1-1-2023   | PRICE CHANGE: MOST FINISHING PRODUCTS - SOME PRICES LOWER!   |
| G6                    | 2-1-2023   | PRICE CHANGE: SOME PURFLING ITEMS  |
| G15                   | 4-2-2023   | PRICE CHANGE: ITEM #8460, STD. OIL VARNISHES ITEM #S 2210-2230   |
| G14-G19               | 8-10-2023  | PRICE CHANGE: MOST LIQUID FINISHING PRODUCTS (NOT OLD WOOD); SOME BRUSHES  |
| G17                   | 10-3-2023  | NITRO STICKS DISCONTINUED  |
| G19                   | 11-28-2023 | ITEM #9702 NO LONGER AVAILABLE   |
| G10-G11               | 1-1-2024   | PRICE CHANGE: OLD WOOD FINISHING PRODUCTS  |
| G16                   | 1-18-2024  | ITEM #7060-100G NO LONGER AVAILABLE  |
| G6, G8                | 2-1-2024   | PRICE CHANGE: GERMAN FINGERBOARDS, MISC. PURFLING  |
| G18                   | 2-13-2024  | NO LONGER AVAILABLE: ITEM #7490-100G   |
| G16                   | 3-1-2024   | NO LONGER AVAILABLE: ITEM #5150-100G   |
| G6                    | 3-19-2024  | NO LONGER AVAILABLE: ITEM #W11B  |
| G19                   | 5-31-2024  | NO LONGER AVAILABLE: ITEM #9900  |
| G19                   | 7-17-2024  | ITEM 9908 NO LONGER AVAILABLE  |
| G15                   | 11-11-2024 | ITEM 6120 NO LONGER AVAILABLE  |
| G2-G3                 | 12-4-2024  | ADDED NEW ITEMS: CORE WOOD   |
| G13                   | 12-4-2024  | ADDED 1/4 - 1/10 SIZES FOR ITEM #SW4   |
| G14                   | 12-4-2024  | ADDED ITEM #OWG3-35  |
| G22                   | 1-15-2025  | PRICE CHANGE: ITEM #7420-10G   |
| G23                   | 1-22-2025  | NO LONGER AVAILABLE: ITEM #9706, 9906  |
| G10, G12              | 2-1-2025   | PRICE CHANGE: W11 & W12 PURFLING; GERMAN-MADE FINGERBOARDS   |

